

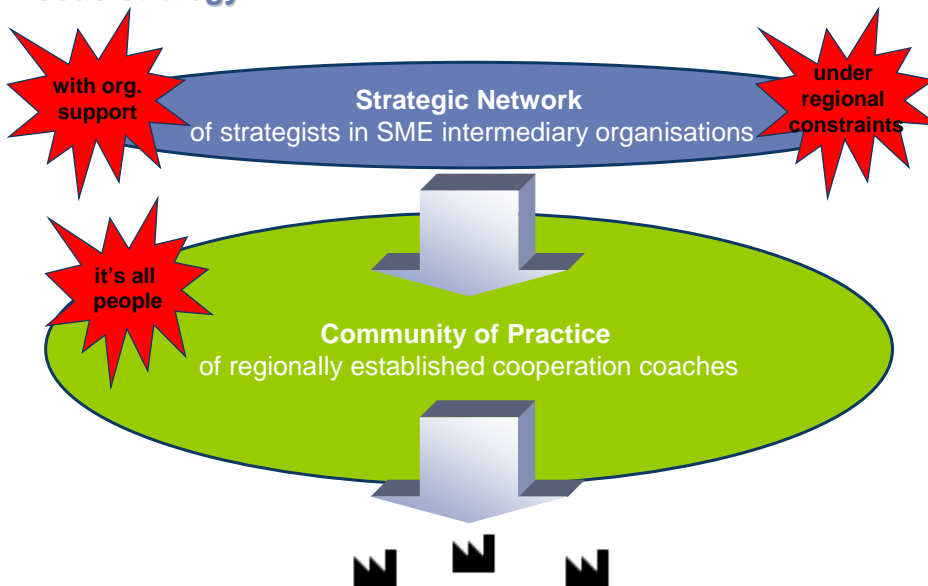
**“In the future competition will be
between strategic networks rather than
individual organisations”**

**THE smE-MPOWER COMMUNITY:
The strategic network for cooperation coaches**



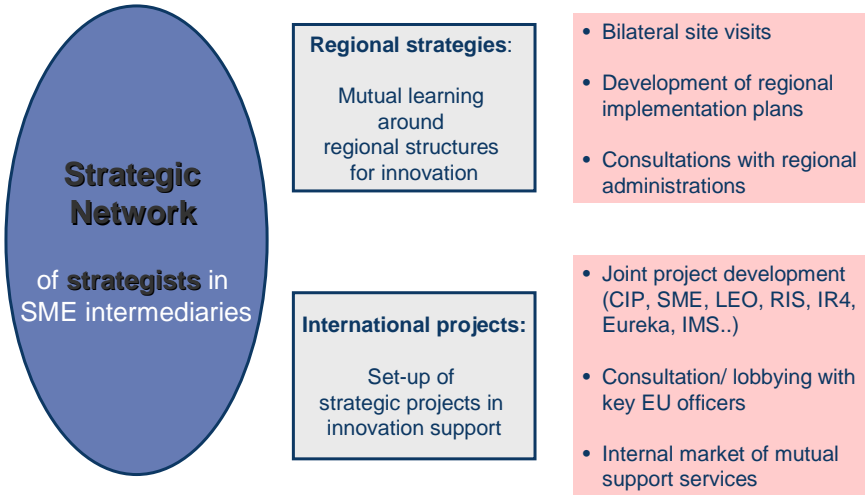
This work by smE-MPOWER (www.sme-mpower.eu) is made available under a
Creative Commons attribution-share alike 3.0 unported license
(<http://creativecommons.org/licenses/by-sa/3.0>).

**The smE-MPOWER Community: a double-
focus strategy**



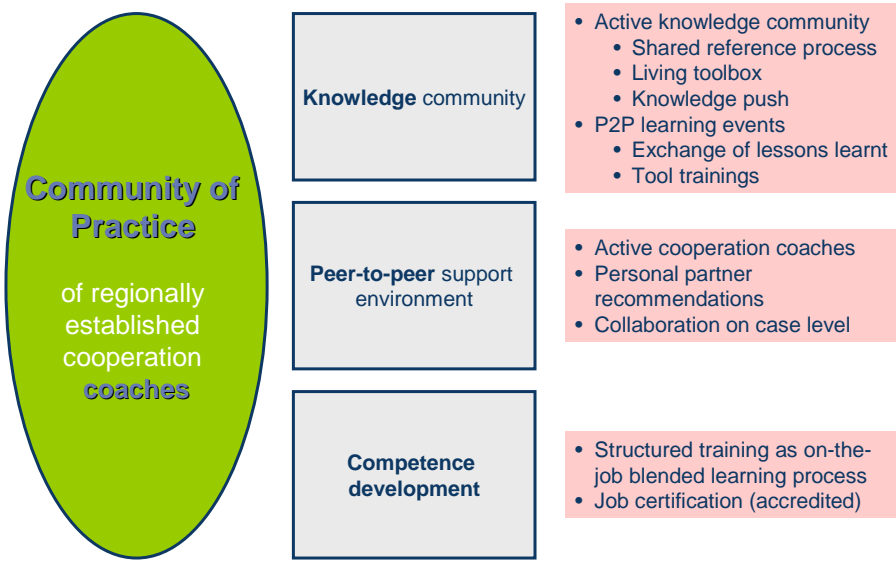
made available by smE-MPOWER under Creative Commons attribution-share alike 3.0

Strategy level benefits and invited actions



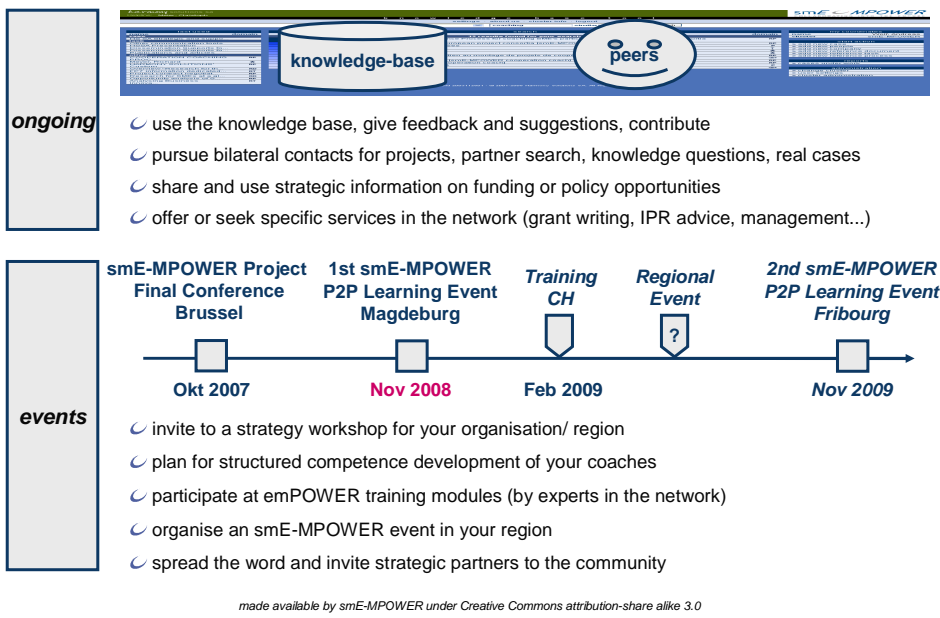
made available by smE-MPOWER under Creative Commons attribution-share alike 3.0

Operational level benefits and invited actions



made available by smE-MPOWER under Creative Commons attribution-share alike 3.0

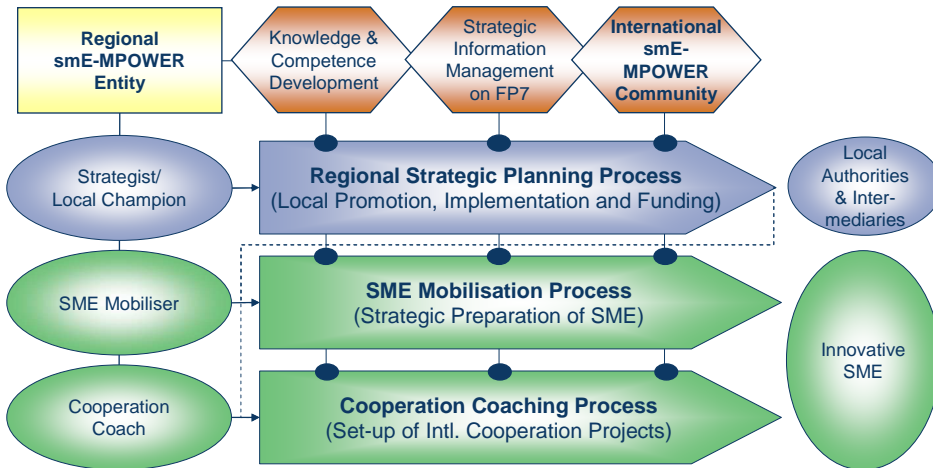
Community structure of interaction



Community summary and Q&A

- The smE-MPOWER Community of Cooperation Coaches is a community of users around the smE-MPOWER **open knowledge**, exploitable under CCPL.
 - There is **no formal association** to become member of, it is about a living community of peers and users committed to exploring collaboration.
 - It is about **person-to-person** interaction, not yet another newsletter or social network platform.
 - To be part of it, prospects are invited to attend the annual P2P Learning Event. One year of free **community membership** is part of the event fees. This way it becomes much easier for organisations to participate during their time of interest.
 - Membership includes **access** to the dynamic smE-MPOWER knowledge base and to a network of collaborating colleagues with all its unexplored possibilities.
 - smE-MPOWER **training modules** are offered independently on a commercial basis and build up towards an smE-MPOWER certification. Members get a 30% reduction on any training module (*under development*).
 - Membership is **per person**, not per organisation, but transferable.
 - In the unlikely case that you are really dissatisfied, will find a solution together ☺
- made available by smE-MPOWER under Creative Commons attribution-share alike 3.0

smE-MPOWER Community: regional organisation



made available by smE-MPOWER under Creative Commons attribution-share alike 3.0

smE-MPOWER organisational backing

smE-MPOWER international

- smE-MPOWER privileged exploitation entity
- smE-MPOWER training (together with partners)



Harmony Solutions S.A.
Route du Jura 37
1706 Fribourg, Switzerland
www.harmony-solutions.net

smE-MPOWER network coordination

- in behalf of Harmony Solutions



Fraunhofer IFF
Sandtorstr.22
39106 Magdeburg, Germany
www.iff.fraunhofer.de

One-stop contact:



andreas wolf
mobile +49 179 77 234 00
andreas.wolf@iff.fraunhofer.de
www.sme-mpower.eu

made available by smE-MPOWER under Creative Commons attribution-share alike 3.0